

# COLT COLLECTIVE COMMITMENTS

# CULTURE

We commit to a culture of **high expectations** with consistent messages to students to ensure **high levels of learning**.



We commit to making decisions based upon what is **best for our students**.



We commit to equitable, **school wide** behavioral expectations and **shared responsibility** for our school.

We commit to a culture of **collaboration** where we assume responsibility for “our” students and **work together with all grade levels** to ensure student needs are met.



We commit to building strong **relationships** and speaking kindly of one another.

We commit to develop, model, and nurture **purposeful relationships** characterized by **kindness** and **respect** with staff, students, and parents.

# COLT COLLECTIVE COMMITMENTS LEADERSHIP

We commit to practicing **shared leadership and building trust**, with teachers and students assisting in **decision making** at our school.



We commit to **using data** to make decisions upon **what is best for our students**.

We commit to having **clear expectations** for students and teachers that are **communicated consistently** throughout the school.

We commit to being active members of a **collaborative team** and having a shared responsibility for the **growth and success** of our students.

We commit to **stay connected** with all stakeholders and **support** each other.



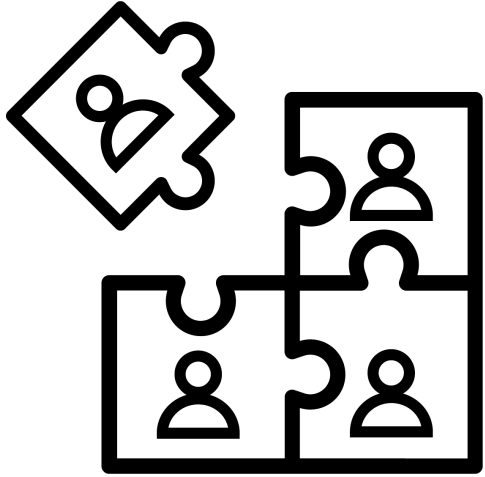
We commit to providing **opportunities for students** to increase their **leadership skills**, both in the classroom and throughout the school.



We commit to **building trust** with staff, parents, and students to make **decisions based** upon what is **best for our students**.

# COLT COLLECTIVE COMMITMENTS INSTRUCTION

We commit to **explicit instruction** where teachers are **intentional** and utilize

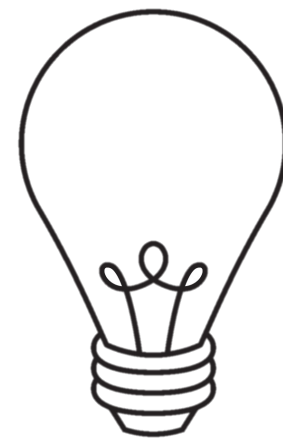


best practices including **differentiation**, **engagement**, and **real-world examples**.

We commit to providing targeted, goal, and **data driven instruction** and meeting our **learning objectives**.



We commit to instruction that **challenges** the students who already know it, **teaches** the students who are learning it, and **provide support** for those students who struggle learning a skill or concept.



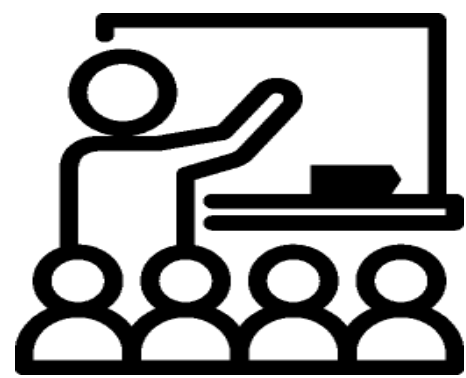
We commit to **rigorous instruction** using **scaffolding** to ensure all students have access to **grade level materials**.

We commit to teaching the **standards** and ensuring that lessons have a clear purpose by identifying the **success criteria** to guide our lessons.

We commit to **student focused instruction** where **all students** are **engaged** and have **ownership** in their learning.

# COLT COLLECTIVE COMMITMENTS ASSESSMENT

We commit to using targeted **assessments** aligned with the CORE to **guide instruction** and ensure student learning.



We commit to creating a safe testing environment and using **common formative assessments** to identify each student's knowledge of essential standards and learning targets, including consistent **progress monitoring**, to look at student growth.



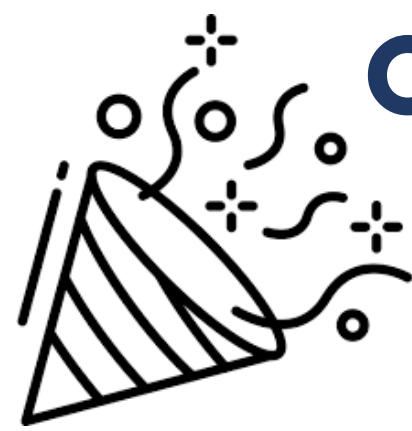
We commit to **providing opportunities** for students to effectively track their progress to ensure student **reflection and growth**.

We commit to providing students **meaningful assessments** to **demonstrate their learning**.

# COLT COLLECTIVE COMMITMENTS

## CLIMATE

We commit to a climate where students, parents, and staff are **mutually respected** in all of our **beliefs and actions**.



We commit to a climate where we **celebrate others** and **everyone belongs**.

We commit to interactions that are **inclusive, genuine, welcoming,** and **respectful** when **communicating** with students, parents, and staff.



We commit to fostering **positive relationships** with all stakeholders and know that they are key to **successful learning**.

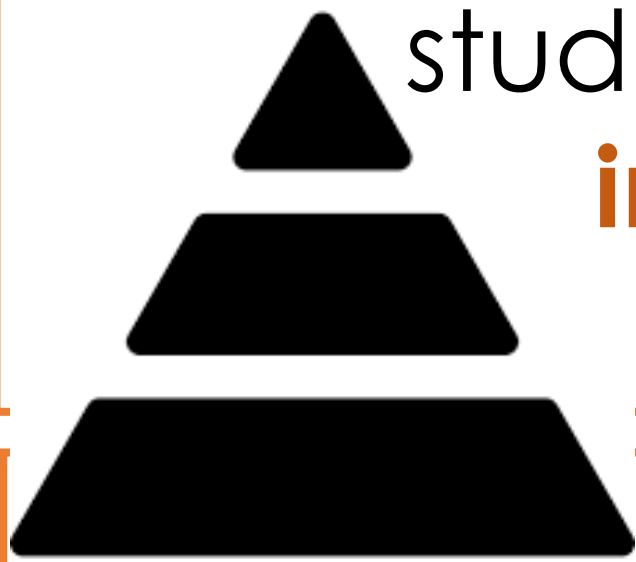
We commit to providing an **environment** that is **safe** and ensure that we **learn** from each other.

# COLT COLLECTIVE COMMITMENTS EXTENSIONS AND INTERVENTIONS

We commit to providing **data driven** interventions and extensions **for all students** in order to meet their **individual needs** in a timely manner.



We commit to a **tiered approach** to interventions where every student receives Tier 1 instruction. When needed, Tier 2 is **targeted support**, based upon individual student needs, and Tier 3 is **intensive individualized** support.



We commit to **collaborating** as a PLC to **utilize the talents of staff** to ensure that all students learn at high levels.

We commit to providing the **resources and support** needed to ensure the **needs of all students** are met.



We commit to providing interventions and extensions that **ensure mastery** of the **essential standards** in reading and math.

We commit to providing extra support to students in **small, targeted groups**, that are flexible and based upon student needs.